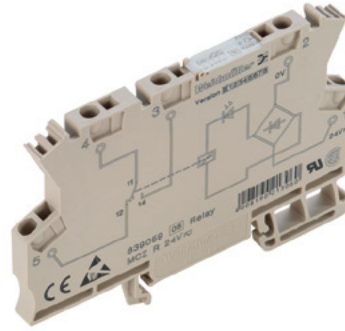


MiniConditioner MCZ R

1 CO contact AC/DC/UC coil

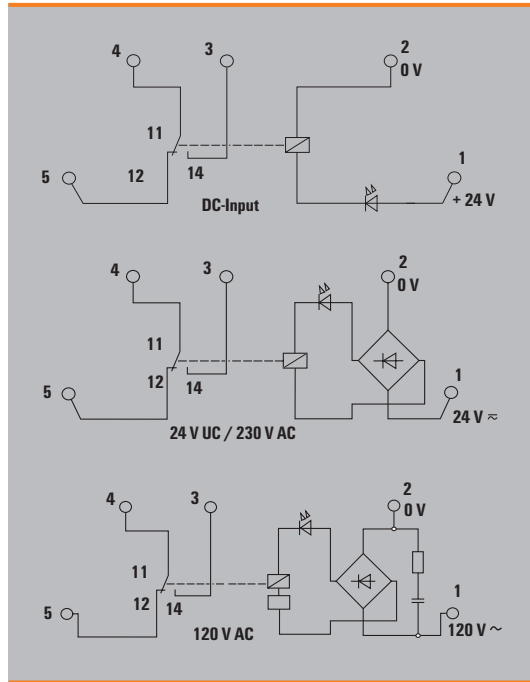
The module can be used as a universal interface between the controller and the actuator to switch small and medium-sized loads

- Reduced installation and commissioning costs, thanks to the use of the proven tension-spring connection system
- Pluggable cross-connection at input and output minimises the wiring workload.
- Width 6 mm
- For mounting on TS 35



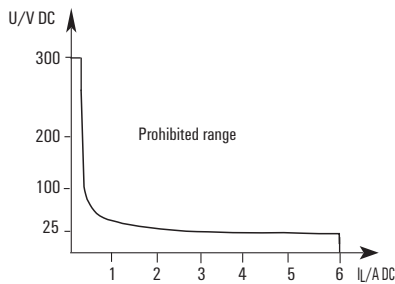
Technical data

Output	
Rated switching voltage/Continuous current	250 V AC 6 A
Max. switching voltage, AC	250 V
Making current	6 A
Min. switching power	100 mA / 5 V, 10 V / 10 mA, 24 V / 1 mA
Max. switching power	1500 VA
Contact material	AgSnO2
Mechanical service life	20 x 10 ⁶ switching cycles
Max. switching frequency at rated load	0.1 Hz
Rated data	
Ambient temperature (operational)	-25 °C...+50 °C
Storage temperature	-40 °C...+60 °C
Humidity	40 °C / 93 % rel. humidity, no condensation
Approvals	CE; CSA; cURus; GL; GOSTME25
Insulation coordination (EN 50178)	
Rated voltage	300 V
Impulse withstand voltage	4 kV (1.2/50 µs)
Dielectric strength input - output	4 kV _{eff} / 1 s
Dielectric strength, contact / contact	
Dielectric strength to mounting rail	4 kV _{eff} / 1 min.
Creepage and clearance distance input - output	≥ 5.5 mm
Surge voltage category	III
Pollution severity	2
Dimensions	
Clamping range (nominal / min. / max.)	mm ² 1.5 / 0.5 / 2.5
Depth x width x height	mm 63.2 / 6 / 91
Note	
End plate AP MCZ 1.5: 8389030000 Accessories and dimensional drawings: refer to the MCZ Accessories page.	



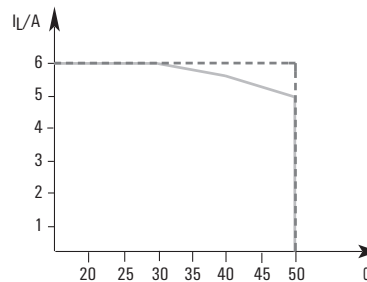
Applications

Limit curve



Derating curve

— in a row without spacing on terminal rail
 - - - - in a row with 20 mm spacing on terminal rail



MiniConditioner MCZ R
1 CO contact AC/DC/UC coil

Ordering data

	24 V DC 1 CO	24 V DC 1 CO Au	24 V UC 1 CO	110 V DC 1 CO
Input				
Rated control voltage	24 V DC ±20 %	24 V DC ±20 %	24 V UC ±10 %	110 V DC ±10 %
Rated current AC / DC	/ 6.3 mA	/ 6.3 mA	11 mA / 6.4 mA	/ 2.85 mA
Power rating	156 mW	156 mW	160 mVA / 150 mW	340 mW
AC response/dropout Volt			19.5 V / 3 V	
DC response/dropout Volt	19 V / 4 V	19 V / 4 V	19.5 V / 3 V	approx. 68 V / approx. 19 V
AC pickup/dropout current				
DC pickup/dropout current				1,6 mA / 0,4 mA
Status indicator	Green LED	Green LED	Green LED	Green LED
Protective circuit	Integrated free-wheel diode, Reverse polarity protection	Integrated free-wheel diode, Reverse polarity protection	Rectifier	Rectifier
Load side				
Switch-on delay	< 5 ms	< 5 ms	< 6 ms	< 6 ms
Switch-off delay	< 15 ms	< 15 ms	< 35 ms	< 15 ms

Ordering data

Complete module					
CO contact	Type	MCZ R 24VDC	MCZ R 24VDC 5uAu	MCZ R 24VUC	MCZ R 110VDC
	Order No.	8365980000	8442960000	8390590000	8467470000
	Type				
	Order No.				

Note		Can safely switch a load of: 1...60 V AC/DC, 1...300 mA. If higher loads are switched this can damage the gold plating.		

Ordering data

	120 V AC 1 CO	230 V AC 1 CO
Input		
Rated control voltage	120 V AC -15 % / +10 %	230 V AC ±10 %
Rated current AC / DC	7 mA /	9.5 mA /
Power rating	0.85 VA	2.1 VA
AC response/dropout Volt	85 V / 17 V	150 V / 60 V
DC response/dropout Volt		
AC pickup/dropout current	4 mA / 1.3 mA	5 mA / 2.5 mA
DC pickup/dropout current		
Status indicator	Green LED	Green LED
Protective circuit	Rectifier	Rectifier
Load side		
Switch-on delay	< 17 ms	< 11 ms
Switch-off delay	< 35 ms	< 35 ms

Ordering data

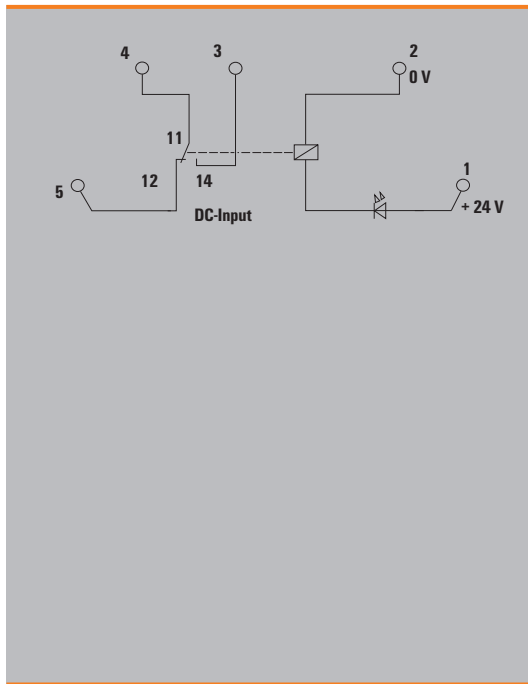
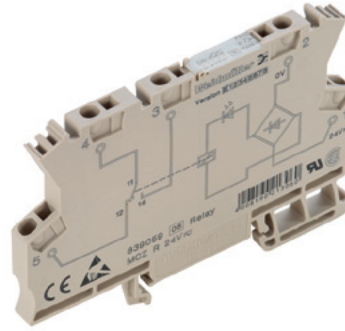
Complete module			
CO contact	Type	MCZ R 120VAC	MCZ R 230VAC
	Order No.	8420880000	8237710000
	Type		
	Order No.		

Note		

MCZ R TRAK

1 CO contact or 1 NO contact DC coil

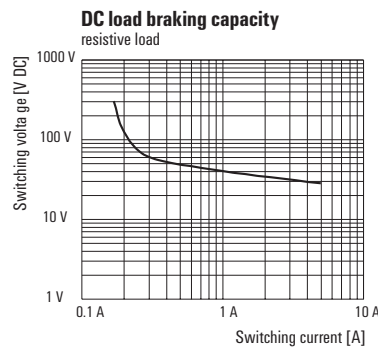
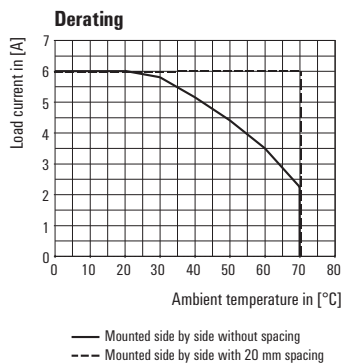
- 1 CO contact
- Component for rail industry applications
- Vibration requirements according to EN 61373, requirements category 1 class B
- Voltage fluctuations -30 %/+25 % and ±40 % for 0.1 sec
- Voltage interruptions at input up to 10 ms
- Condensation permissible



Technical data

Output	
Rated switching voltage / Continuous current	250 V AC / 6 A
Max. switching voltage, AC	250 V
Making current	6 A
Min. switching power	100 mA / 5 V, 10 V / 10 mA, 24 V / 1 mA
Max. switching power	1500 VA
Contact material	AgSnO
Mechanical service life	20 x 10 ⁶ switching cycles
Max. switching frequency at rated load	0.1 Hz
Rated data	
Ambient temperature (operational)	-25 °C...+70 °C
Storage temperature	-40 °C...+85 °C
Humidity	95 % for 30 days, minimal condensation to EN 50155
Approvals	CE; GOSTME25
Insulation coordination (EN 50178)	
Rated voltage	300 V
Impulse withstand voltage	4 kV (1.2/50 µs)
Dielectric strength input - output	4 kV _{eff} / 1 s
Dielectric strength, contact / contact	
Dielectric strength to mounting rail	4 kV _{eff} / 1 min.
Creepage and clearance distance input - output	≥ 5.5 mm
Surge voltage category	III
Pollution severity	2
Dimensions	
Clamping range (nominal / min. / max.)	mm ² 1.5 / 0.5 / 2.5
Depth x width x height	mm 63.2 / 6 / 91
Tension clamp connection	
Clamping range (nominal / min. / max.)	mm ² 1.5 / 0.5 / 2.5
Depth x width x height	mm 63.2 / 6 / 91
Note	
End plate AP MCZ 1.5: 8389030000 Accessories and dimensional drawings: refer to the MCZ Accessories page.	

Applications



MCZ R TRAK

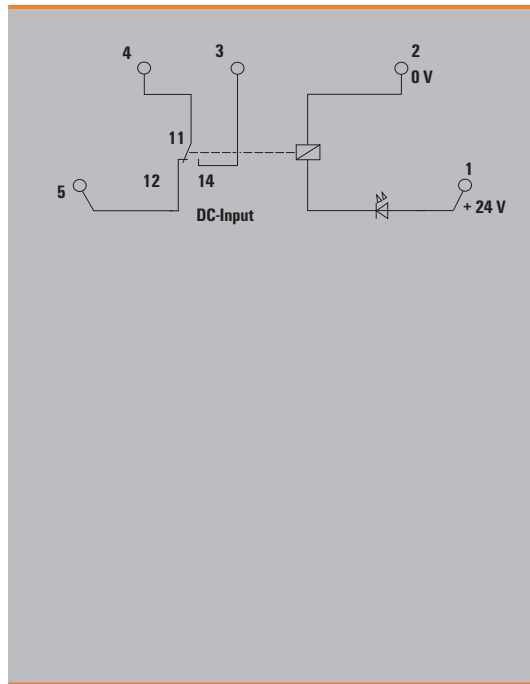
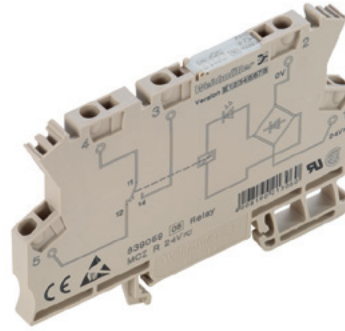
1 CO contact or 1 NO contact DC coil

Ordering data	24 V DC TRAK	36 V DC TRAK	48...110 V DC TRAK
Input			
Rated control voltage	24 V DC +25 % / -30 %	36 V DC +25 % / -30 %	48 V...110 V DC +25 % / -30 %
Rated current AC / DC	/ 11.5...16.5 mA	/ 8...12 mA	/ < 3 mA
Power rating	195...500 mW	200...540 mW	< 300 mW
AC response/dropout Volt			
DC response/dropout Volt	14 V / 3 V	18 V / 4,5 V	> 25 V / < 6 V
AC pickup/dropout current			
DC pickup/dropout current			
Status indicator	Green LED	Green LED	Green LED
Protective circuit	Integrated free-wheel diode, Reverse polarity protection	Integrated free-wheel diode, Reverse polarity protection	Integrated free-wheel diode, Reverse polarity protection
Load side			
Switch-on delay	< 11 ms	< 6 ms	< 4 ms
Switch-off delay	< 50 ms	< 70 ms	< 100 ms
Ordering data Complete module			
CO contact	Type MCZ R 24Vdc 1CO TRAK	Type MCZ R 36Vdc 1CO TRAK	Type MCZ R 48...110Vdc 1CO TRAK
	Order No. 8713890000	Order No. 8713900000	Order No. 8713910000
NO contact	Type MCZ R 24Vdc 1NO TRAK	Type MCZ R 36Vdc 1NO TRAK	Type MCZ R 48...110Vdc 1NO TRAK
	Order No. 8499550000	Order No. 8499560000	Order No. 8574070000
Note			

MCZ R TRAK Au

1 CO contact or 1 NO contact DC coil

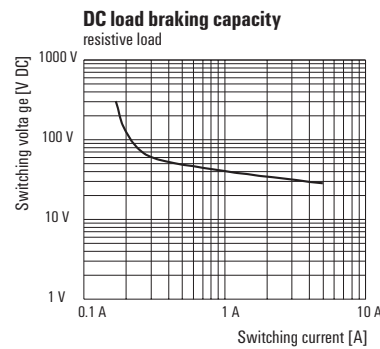
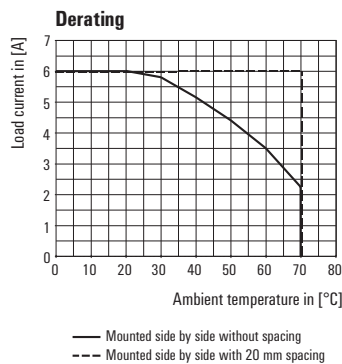
- 1 CO with hard gold-plated contacts
- Component for rail industry applications
- Vibration requirements according to EN 61373, requirements category 1 class B
- Voltage fluctuations -30 %/+25 % and ±40 % for 0.1 sec
- Voltage interruptions at input up to 10 ms
- Condensation permissible



Technical data

Output	
Rated switching voltage / Continuous current	250 V AC / 6 A
Max. switching voltage, AC	250 V
Making current	6 A
Min. switching power	1 V / 1 mA
Max. switching power	1500 VA
Contact material	AgSnO 5µm Au
Mechanical service life	20 x 10 ⁶ switching cycles
Max. switching frequency at rated load	0.1 Hz
Rated data	
Ambient temperature (operational)	-25 °C...+70 °C
Storage temperature	-40 °C...+85 °C
Humidity	95 % for 30 days, minimal condensation to EN 50155
Approvals	CE; GOSTME25
Insulation coordination (EN 50178)	
Rated voltage	300 V
Impulse withstand voltage	4 kV (1.2/50 µs)
Dielectric strength input - output	4 kV _{eff} / 1 s
Dielectric strength, contact / contact	
Dielectric strength to mounting rail	4 kV _{eff} / 1 min.
Creepage and clearance distance input - output	≥ 5.5 mm
Surge voltage category	III
Pollution severity	2
Dimensions	
Clamping range (nominal / min. / max.)	mm ² 1.5 / 0.5 / 2.5
Depth x width x height	mm 63.2 / 6 / 91
Tension clamp connection	
Clamping range (nominal / min. / max.)	mm ² 1.5 / 0.5 / 2.5
Depth x width x height	mm 63.2 / 6 / 91
Note	
End plate AP MCZ 1.5: 8389030000 Accessories and dimensional drawings: refer to the MCZ Accessories page.	

Applications



MCZ R TRAK Au

1 CO contact or 1 NO contact DC coil

Ordering data

	24 V DC TRAK Au	36 V DC TRAK Au	48...110 V DC TRAK Au
Input			
Rated control voltage	24 V DC +25 % / -30 %	36 V DC +25 % / -30 %	48 V...110 V DC +25 % / -30 %
Rated current AC / DC	/ 11.5...16.5 mA	/ 8...12 mA	/ < 3 mA
Power rating	195...500 mW	200...540 mW	< 300 mW
AC response/dropout Volt			
DC response/dropout Volt	14 V / 3 V	18 V / 4,5 V	> 25 V / < 6 V
AC pickup/dropout current			
DC pickup/dropout current			
Status indicator	Green LED	Green LED	Green LED
Protective circuit	Integrated free-wheel diode, Reverse polarity protection	Integrated free-wheel diode, Reverse polarity protection	Integrated free-wheel diode, Reverse polarity protection
Load side			
Switch-on delay	< 11 ms	< 6 ms	< 4 ms
Switch-off delay	< 50 ms	< 70 ms	< 100 ms

Ordering data

CO contact	Type	MCZ R 24VDC 1CO AU TRAK	MCZ R 36VDC 1CO AU TRAK	MCZ R 48...110VDC 1CO AU TRAK
	Order No.	8790520000	8790510000	8790500000
	Type			
	Order No.			

Note

Can safely switch a load of: 1...60 V AC/DC, 1...300 mA. If higher loads are switched this can damage the gold plating.	Can safely switch a load of: 1...60 V AC/DC, 1...300 mA. If higher loads are switched this can damage the gold plating.	Can safely switch a load of: 1...60 V AC/DC, 1...300 mA. If higher loads are switched this can damage the gold plating.
---	---	---

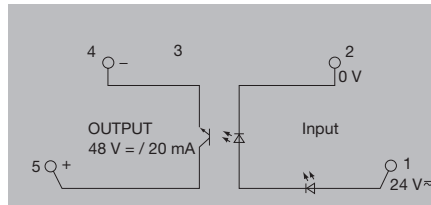
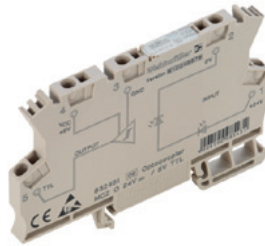
MCZ-SERIES – solid-state relays

MiniConditioner MCZ 0

- Universal interface between controller and sensor/ actuator
- Tension-clamp connection system
- Plug-in cross-connection
- 6 mm modular wide

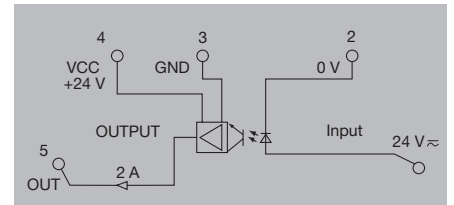
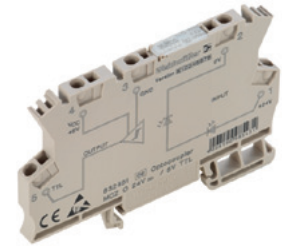
24 V UC

Connection system



24 V UC / 24 V 2 A

Connection system



Technical data

Control side	
Rated control voltage	24 V UC ±20 %
Nominal control current	10 mA DC ±20 %, 10 mA AC ±20 %
Cut-in (switch-on) voltage	≥ 16.8 V DC, ≥ 14.4 V AC
Dropout voltage	≤ 15.7 V DC, ≤ 13 V AC
Input frequency	AC: 5 Hz / DC: 10 Hz
Power rating	230 mW / 280 mVA
Status indicator	Green LED
Protective circuit	
Load side	
Rated switching voltage	5...48 V DC
Continuous current	20 mA
Making current	
Solid-state type	Transistor
Voltage drop at max. load	≤ 1 V
Leakage current	
Protective circuit, load side	Integrated free-wheel diode
Short-circuit-proof	No
Switch-on delay	AC: 10 ms / DC: 20 ms
Switch-off delay	AC: 45 ms / DC: 40 ms
General data	
Ambient temperature (operational)	-25 °C...+50 °C
Storage temperature	-40 °C...+85 °C
Humidity	40 °C / 93 % rel. humidity, no condensation
Approvals	CE; CSA; cURus; GOSTME25
Insulation coordination (EN 50178)	
Rated voltage	300 V
Impulse withstand voltage	6 kV (1.2/50 µs)
Dielectric strength for control side - load side	4 kV _{eff} / 1 min.
Dielectric strength to mounting rail	4 kV _{eff} / 1 min.
Clearance and creepage distances for control side - load side	≥ 5.5 mm
Surge voltage category	III
Pollution severity	2

Rated control voltage	24 V UC ±20 %
Nominal control current	10 mA DC ±20 %, 10 mA AC ±20 %
Cut-in (switch-on) voltage	≥ 16.8 V DC, ≥ 14.4 V AC
Dropout voltage	≤ 15.7 V DC, ≤ 13 V AC
Input frequency	AC: 5 Hz / DC: 10 Hz
Power rating	230 mW / 280 mVA
Status indicator	Green LED
Protective circuit	
Rated switching voltage	5...48 V DC
Continuous current	20 mA
Making current	
Solid-state type	Transistor
Voltage drop at max. load	≤ 1 V
Leakage current	
Protective circuit, load side	Integrated free-wheel diode
Short-circuit-proof	No
Switch-on delay	AC: 10 ms / DC: 20 ms
Switch-off delay	AC: 45 ms / DC: 40 ms
Ambient temperature (operational)	-25 °C...+50 °C
Storage temperature	-40 °C...+85 °C
Humidity	40 °C / 93 % rel. humidity, no condensation
Approvals	CE; CSA; cURus; GOSTME25
Rated voltage	300 V
Impulse withstand voltage	6 kV (1.2/50 µs)
Dielectric strength for control side - load side	4 kV _{eff} / 1 min.
Dielectric strength to mounting rail	4 kV _{eff} / 1 min.
Clearance and creepage distances for control side - load side	≥ 5.5 mm
Surge voltage category	III
Pollution severity	2

Rated control voltage	24 V UC ±20 %
Nominal control current	10 mA DC ±20 %, 10 mA AC ±20 %
Cut-in (switch-on) voltage	≥ 14.4 V AC, ≥ 15 V DC
Dropout voltage	≤ 13 V AC, ≤ 15 V DC
Input frequency	AC: 10 Hz / DC: 30 Hz
Power rating	195 mW / 220 mVA
Status indicator	LED
Protective circuit	
Rated switching voltage	24 VDC ±20%
Continuous current	2 A
Making current	
Solid-state type	Transistor
Voltage drop at max. load	≤ 1.8 V
Leakage current	
Protective circuit, load side	Varistor
Short-circuit-proof	Yes
Switch-on delay	≤ 10 ms
Switch-off delay	≤ 10 ms
Ambient temperature (operational)	-25 °C...+40 °C
Storage temperature	-40 °C...+60 °C
Humidity	40 °C / 93 % rel. humidity, no condensation
Approvals	CE; CSA; cURus; GOSTME25
Rated voltage	300 V
Impulse withstand voltage	6 kV (1.2/50 µs)
Dielectric strength for control side - load side	1.2 kV _{eff} / 5 s
Dielectric strength to mounting rail	4 kV _{eff} / 1 min.
Clearance and creepage distances for control side - load side	≥ 5.5 mm
Surge voltage category	III
Pollution severity	2

Dimensions	
Clamping range (nominal / min. / max.)	mm ²
Depth x width x height	mm
Note	

Tension clamp connection		
Clamping range (nominal / min. / max.)	1.5 / 0.5 / 1.5	
Depth x width x height	63.2 / 6 / 91	
Note		

Tension clamp connection		
Clamping range (nominal / min. / max.)	1.5 / 0.5 / 1.5	
Depth x width x height	63.2 / 6 / 91	
Note		
* Status indicator: green = OK, yellow = partial short circuit, blinking red = short circuit		

Ordering data

Type	Qty.	Order No.
MCZ 0 24VUC	10	8365940000

Type	Qty.	Order No.
MCZ 0 24VUC	10	8365940000

Type	Qty.	Order No.
MCZ 0 24VUC	10	8287730000

Note
Tension-clamp connection

Note

Note

Accessories

Note
End plate AP MCZ 1.5: 8389030000 Accessories and dimensional drawings: refer to the MCZ Accessories page.

Note
End plate AP MCZ 1.5: 8389030000 Accessories and dimensional drawings: refer to the MCZ Accessories page.

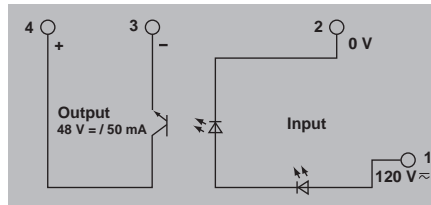
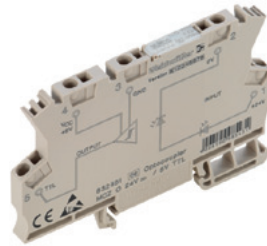
Note
End plate AP MCZ 1.5: 8389030000 Accessories and dimensional drawings: refer to the MCZ Accessories page.

MiniConditioner MCZ O

- Universal interface between controller and sensor/ actuator
- Tension-clamp connection system
- Plug-in cross-connection
- 6 mm modular wide

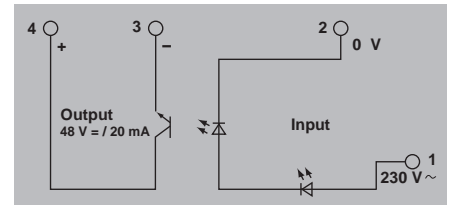
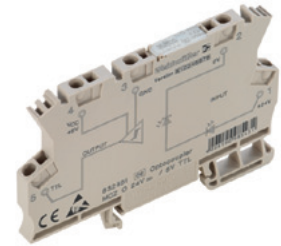
120 V UC

Connection system



230 V AC

Connection system



Technical data

Control side	
Rated control voltage	
Nominal control current	
Cut-in (switch-on) voltage	
Dropout voltage	
Input frequency	
Power rating	
Status indicator	
Protective circuit	
Load side	
Rated switching voltage	
Continuous current	
Making current	
Solid-state type	
Voltage drop at max. load	
Leakage current	
Protective circuit, load side	
Short-circuit-proof	
Switch-on delay	
Switch-off delay	
General data	
Ambient temperature (operational)	
Storage temperature	
Humidity	
Approvals	
Insulation coordination (EN 50178)	
Rated voltage	
Impulse withstand voltage	
Dielectric strength for control side - load side	
Dielectric strength to mounting rail	
Clearance and creepage distances for control side - load side	
Surge voltage category	
Pollution severity	

120 V UC +5 / -15 %
3 mA DC (±10 %), 3 mA AC (±10 %)
≥ 65 V AC, ≥ 70 V DC
≤ 64 V AC, ≤ 64 V DC
AC: 5 Hz duty factor 1:2, DC: 20 Hz duty factor 1:2
350 mW / 400 mVA
Green LED
5...48 V DC
50 mA
Transistor
1.6 V
≤ 1 mA
Integrated free-wheel diode
No
≤ 30 ms
≤ 40 ms
-25 °C...+40 °C
-40 °C...+60 °C
40 °C / 93 % rel. humidity, no condensation
CE; CSA; cURus; GOSTME25
300 V
6 kV (1.2/50 µs)
1.2 kV _{eff} / 5 s
4 kV _{eff} / 1 min.
≥ 5.5 mm
III
2

230 V AC +5 % / -15 %
10 mA AC ±20 %
≥ 175 V AC
≤ 125 V AC
AC: 5 Hz duty factor 1:2
2.3 VA
Green LED
5...48 V DC
20 mA
Transistor
1.6 V
≤ 1 mA
Integrated free-wheel diode
No
≤ 30 ms
≤ 40 ms
-25 °C...+40 °C
-40 °C...+60 °C
40 °C / 93 % rel. humidity, no condensation
CE; CSA; cURus; GOSTME25
300 V
6 kV (1.2/50 µs)
1.2 kV _{eff} / 5 s
4 kV _{eff} / 1 min.
≥ 5.5 mm
III
2

Dimensions	
Clamping range (nominal / min. / max.)	mm ²
Depth x width x height	mm
Note	

Tension clamp connection	
1.5 / 0.5 / 1.5	
63.2 / 6 / 91	
Note	

Tension clamp connection	
1.5 / 0.5 / 1.5	
63.2 / 6 / 91	
Note	

Ordering data

Tension-clamp connection

Type	Qty.	Order No.
MCZ O 120VUC	10	8421060000

Type	Qty.	Order No.
MCZ O 230VAC	10	8421380000

Note

Note

Note

Accessories

Note

End plate AP MCZ 1.5: 8389030000 Accessories and dimensional drawings: refer to the MCZ Accessories page.
--

End plate AP MCZ 1.5: 8389030000 Accessories and dimensional drawings: refer to the MCZ Accessories page.
--

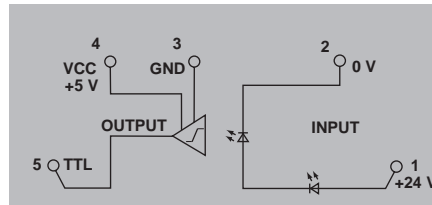
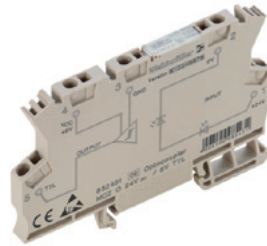
MCZ-SERIES – solid-state relays

MiniConditioner MCZ 0

- Universal interface between controller and sensor/ actuator
- Tension-clamp connection system
- Plug-in cross-connection
- 6 mm modular wide

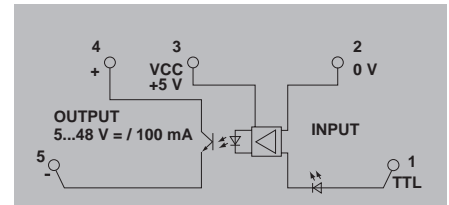
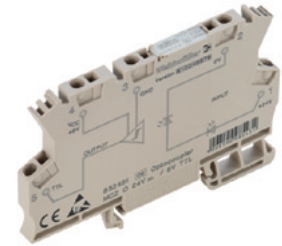
24 V DC / 5 V TTL

Connection system



5 V TTL / 5...48 V DC

Connection system



Technical data

Control side	
Rated control voltage	24 V DC ±16 %
Nominal control current	5 mA DC (±20 %)
Cut-in (switch-on) voltage	≥ 16.8 V DC
Dropout voltage	≤ 16.5 V DC
Input frequency	100 kHz duty factor 1:2, 50 kHz duty factor 1:10
Power rating	112 mW
Status indicator	Green LED
Protective circuit	
Load side	
Rated switching voltage	5 V TTL
Continuous current	8 ma, Fan out = 20 LS-TTL
Making current	
Solid-state type	TTL
Voltage drop at max. load	
Leakage current	
Protective circuit, load side	
Short-circuit-proof	No
Switch-on delay	1 µs (at 20 V DC)
Switch-off delay	2.5 µs (at 28 V DC)
General data	
Ambient temperature (operational)	-25 °C...+40 °C
Storage temperature	-40 °C...+60 °C
Humidity	40 °C / 93 % rel. humidity, no condensation
Approvals	CE; CSA; cURus; GOSTME25
Insulation coordination (EN 50178)	
Rated voltage	300 V
Impulse withstand voltage	6 kV (1.2/50 µs)
Dielectric strength for control side - load side	1.2 kV _{eff} / 5 s
Dielectric strength to mounting rail	4 kV _{eff} / 1 min.
Clearance and creepage distances for control side - load side	≥ 5.5 mm
Surge voltage category	III
Pollution severity	2

Rated control voltage	24 V DC ±16 %
Nominal control current	5 mA DC (±20 %)
Cut-in (switch-on) voltage	≥ 16.8 V DC
Dropout voltage	≤ 16.5 V DC
Input frequency	100 kHz duty factor 1:2, 50 kHz duty factor 1:10
Power rating	112 mW
Status indicator	Green LED
Protective circuit	
Rated switching voltage	5 V TTL
Continuous current	8 ma, Fan out = 20 LS-TTL
Making current	
Solid-state type	TTL
Voltage drop at max. load	
Leakage current	
Protective circuit, load side	
Short-circuit-proof	No
Switch-on delay	1 µs (at 20 V DC)
Switch-off delay	2.5 µs (at 28 V DC)
Ambient temperature (operational)	-25 °C...+40 °C
Storage temperature	-40 °C...+60 °C
Humidity	40 °C / 93 % rel. humidity, no condensation
Approvals	CE; CSA; cURus; GOSTME25
Rated voltage	300 V
Impulse withstand voltage	6 kV (1.2/50 µs)
Dielectric strength for control side - load side	1.2 kV _{eff} / 5 s
Dielectric strength to mounting rail	4 kV _{eff} / 1 min.
Clearance and creepage distances for control side - load side	≥ 5.5 mm
Surge voltage category	III
Pollution severity	2

Rated control voltage	5 V TTL
Nominal control current	1.65 mA DC
Cut-in (switch-on) voltage	
Dropout voltage	
Input frequency	2.4 kHz
Power rating	10 mW
Status indicator	Green LED
Protective circuit	
Rated switching voltage	5...48 V DC
Continuous current	100 mA
Making current	
Solid-state type	TTL
Voltage drop at max. load	≤ 1.8 V
Leakage current	
Protective circuit, load side	
Short-circuit-proof	No
Switch-on delay	< 17 µs
Switch-off delay	< 250 µs
Ambient temperature (operational)	-25 °C...+40 °C
Storage temperature	-40 °C...+60 °C
Humidity	40 °C / 93 % rel. humidity, no condensation
Approvals	CE; CSA; cURus; GOSTME25
Rated voltage	300 V
Impulse withstand voltage	6 kV (1.2/50 µs)
Dielectric strength for control side - load side	1.2 kV _{eff} / 5 s
Dielectric strength to mounting rail	4 kV _{eff} / 1 min.
Clearance and creepage distances for control side - load side	≥ 5.5 mm
Surge voltage category	III
Pollution severity	2

Dimensions

Clamping range (nominal / min. / max.)	mm ²
Depth x width x height	mm

Note

Tension clamp connection

1.5 / 0.5 / 1.5
63.2 / 6 / 91

Tension clamp connection

1.5 / 0.5 / 1.5
63.2 / 6 / 91

Ordering data

Tension-clamp connection

Type	Qty.	Order No.
MCZ 0 24VDC	10	8324610000

Type	Qty.	Order No.
MCZ 0 5VTTL	10	8398940000

Note

Accessories

Note

End plate AP MCZ 1.5: 8389030000 Accessories and dimensional drawings: refer to the MCZ Accessories page.
--

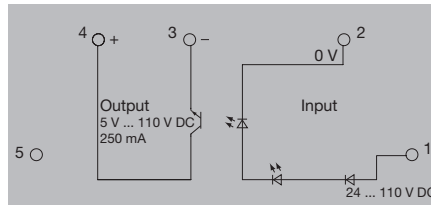
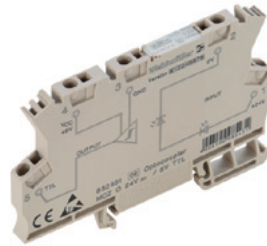
End plate AP MCZ 1.5: 8389030000 Accessories and dimensional drawings: refer to the MCZ Accessories page.
--

MCZ O TRAK

- Component for rail industry applications
- Fulfills requirements acc. to EN 50155
- Voltage fluctuations -30 % / +25 %
- Operating temperature -25...+70 °C (85 °C / 10 min.) acc. to EN 50155
- Condensation permissible

24 V DC TRAK

Connection system



Technical data

Control side	
Rated control voltage	24...110 V DC -30 / +25 %
Nominal control current	2.8 mA DC
Cut-in (switch-on) voltage	≥ 9.6 V DC
Dropout voltage	≤ 9 V DC
Input frequency	max. 10 Hz
Power rating	
Status indicator	Green LED
Protective circuit	
Load side	
Rated switching voltage	5...137.5 V DC
Continuous current	180 mA
Making current	
Solid-state type	Transistor
Voltage drop at max. load	≤ 1.7 V
Leakage current	
Protective circuit, load side	Varistor, integrated free-wheel diode
Short-circuit-proof	No
Switch-on delay	≤ 10 ms
Switch-off delay	≤ 40 ms
General data	
Ambient temperature (operational)	-25 °C...+70 °C
Storage temperature	-40 °C...+85 °C
Humidity	95 % for 30 days, minimal condensation to EN 50155
Approvals	CE, GOSTME25
Insulation coordination (EN 50178)	
Rated voltage	300 V
Impulse withstand voltage	6 kV (1.2/50 μs)
Dielectric strength for control side - load side	1.2 kV _{eff} / 5 s
Dielectric strength to mounting rail	4 kV _{eff} / 1 min.
Clearance and creepage distances for control side - load side	≥ 5.5 mm
Surge voltage category	III
Pollution severity	2

Dimensions	
Clamping range (nominal / min. / max.)	mm ²
Depth x width x height	mm
Note	

Ordering data

Tension-clamp connection

Note

Accessories

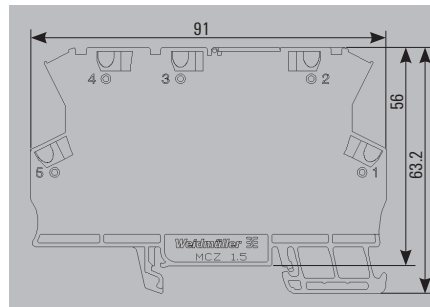
Note

Tension clamp connection		
	1.5 / 0.5 / 1.5	
	63.2 / 6 / 91	

Type	Qty.	Order No.
MCZ O TRAK 24.110VDC	10	8820710000

End plate AP MCZ 1.5: 8389030000 Accessories and dimensional drawings: refer to the MCZ Accessories page.
--

MCZ accessories



Ordering data

End plate

Type	Qty.	Order No.
AP MCZ 1.5	50	8389030000



Ordering data

	No. of poles
Plug-in cross-connection, yellow	2
Plug-in cross-connection, yellow	3
Plug-in cross-connection, yellow	4
Plug-in cross-connection, yellow	10
Plug-in cross-connection, yellow	20
Plug-in cross-connection, red	2
Plug-in cross-connection, red	3
Plug-in cross-connection, red	4
Plug-in cross-connection, red	10
Plug-in cross-connection, red	20
Plug-in cross-connection, blue	2
Plug-in cross-connection, blue	3
Plug-in cross-connection, blue	4
Plug-in cross-connection, blue	10
Plug-in cross-connection, blue	20
Plug-in cross-connection, black	2
Plug-in cross-connection, black	3
Plug-in cross-connection, black	4
Plug-in cross-connection, black	10
Plug-in cross-connection, black	20

Type	Qty.	Order No.
ZQV 4N / 2 GE	60	1758250000
ZQV 4N / 3 GE	60	1762630000
ZQV 4N / 4 GE	60	1762620000
ZQV 4N / 10 GE	20	1758260000
ZQV 4N / 20 GE	20	1909020000
red		
ZQV 4N / 2 RT	60	1793950000
ZQV 4N / 3 RT	60	1793980000
ZQV 4N / 4 RT	60	1794010000
ZQV 4N / 10 RT	20	1794040000
ZQV 4N / 20 RT	20	1909150000
blue		
ZQV 4N / 2 BL	60	1793960000
ZQV 4N / 3 BL	60	1793990000
ZQV 4N / 4 BL	60	1794020000
ZQV 4N / 10 BL	20	1794050000
ZQV 4N / 20 BL	20	1909100000
black		
ZQV 4N / 2 SW	60	1793970000
ZQV 4N / 3 SW	60	1794000000
ZQV 4N / 4 SW	60	1794030000
ZQV 4N / 10 SW	20	1794060000
ZQV 4N / 20 SW	20	1909120000



Ordering data

Terminal markers
Screwdriver
End bracket

Type	Qty.	Order No.
WS 10/6 MC NEUTRAL	600	1828450000
SD 0.6x3.5x100	1	9008330000
WEW 35/2	100	1061200000